

Water System Drain Down & Start Up (New Version Jan 23)

Draining Down;

Note; It is not necessary or desirable to switch off the electrical supply to the hot water system's immersion heaters during the drain down process.

1. Turn off the Blue coloured stop cock (clockwise rotation) by the East end (South side) Hangar Door (see Fig. 1 overleaf).
2. Turn off the Blue coloured domestic stop cock (clockwise rotation) located beside the outer kitchen door (main entrance) behind and to the left of, the drop down flap. **Note;** the stop cock and the associated drain valves are hard to see, use a torch to help locate them (see Fig. 2 overleaf).

Open the two, red stop cocks (turn anti-clockwise - see Fig. 2). Briefly turn on the kitchen's cold tap to check the water pressure is dropping / dropped. If pressure remains check the water cock has fully closed.

3. Open the two drain valves (turn anti-clockwise) that are located under the sink in the North toilet (see Fig. 3 overleaf).
4. Open the blue drain valves under the sink in the MT area (see Fig. 4 overleaf for handle positions).

Starting Up;

1. Close the Blue drain valves under the sink in the MT area (see Fig. 4 for handle positions).
2. Close the two drain valves (turn anti-clockwise) that are located under the sink in the North toilet (see Fig. 3)
3. Close the two, **Red** stop cocks that are located by the outer kitchen door (main entrance) behind the drop down flap. **Note;** the main stop cock and associated drain valves are hard to see, use a torch to help locate them (see Fig. 2 overleaf).

Open the **Blue** coloured domestic stop cock alongside the above Red stop cocks (see Fig. 2).

4. Open the Blue coloured stop cock (anti-clockwise rotation) by the East end (South side) Hangar Door (see Fig. 1 overleaf). **Note;** to fully open the valve the handle should be turned approximately 1½ turns.
5. Open the cold tap(s) in the kitchen until water flows freely. Check that the toilet cistern's are filling - flush the toilets again to double check
6. Walk along the hangar's Western end and listen for any water flowing from the drain valves, if found investigate and take appropriate action.

Note; the hot water system can take 10 minutes or more to fill the tank therefore turning on the hot taps may not show any significant flow during this time.

See overleaf for pictures and positions of valves and stop cocks



Fig. 1: Hanger Stop Cock



Fig. 2 and 2a: Domestic Stop Cocks
Blue = mains water supply; Red = drain valves



Fig. 3: Toilet Drain Valves

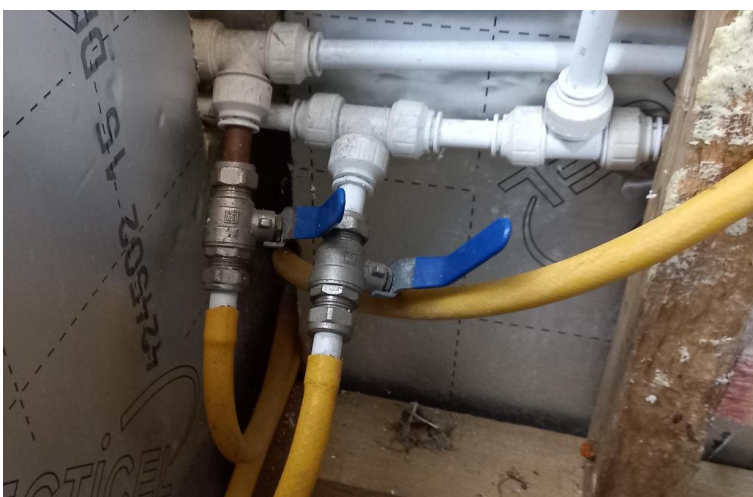


Fig 4: MT Area Drain Valves – Closed Position



MT Area Drain Valves – Open Position